



LED BACK-LIT FLAT PANEL

Color Changing

► **DESIGN & OPTIONS** - LED BACK-LIT FLAT PANELS with remote color changing function come with a unique design, PMMA lens, aluminum frame, and 0-10V dimmable drivers with circuit overload, short circuit, and low-voltage protection, making them safe and reliable. The non-yellowing PC diffuser provides uniform lighting. The fixture comes with 120-277V and in 2x2 and 2x4 sizes. The color temperature can be changed from 3000K to 5000K using the remote.

► **INSTALLATION** - This fixture has convenient recessed mounting for drop in installation with standard grid ceilings. It can also be suspended via aircraft cable or wire (not included) to the attached clips. The clips can be folded over the "T" grid, locking the light to the grid. The low frame for surface mounting installation is sold separately. Use the hand-type or wall-type 2.4 GHz controllers to change the color temperature (sold separately). Refer to install instructions for detailed steps.

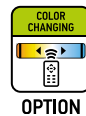
► **APPLICATION** - These fixtures provide illumination in commercial, industrial and residential applications such as: offices, hospitals, schools, retail, and workshops. The fixture is Damp location rated and can operate in temperatures between 14+104°F (-10+40°C).

► **ENERGY SAVINGS & EFFICIENCY** - This fixture provides a lumen output that is equal to or higher than traditional fluorescent architectural troffers and can cut your electric bill by up to 80% instantly. With a lifespan of 60,000 hours, these fixtures are made to last decades under normal operation! This fixture will save you a significant amount of money in its lifetime.

► **CERTIFICATION & WARRANTY** - Buy with confidence: ASD provides a 5-year warranty along with UL and DLC Premium certifications to guarantee top quality products and safety!

Top US certifications allow participation in rebates; please check the rebate programs available in your state.

Catalog number	
Notes	
Type	



PRODUCT LEGEND:

Family	Size	Dimmable	Watts	CCT	Series
ASD-BLP	XX	X	XX	XX	XXX
LED Back-Lit Flat Panel	22 = type 2x2 24 = type 2x4	D = Dimmable	35 = 35 W 50 = 50 W	CC = Color Changing	PRM = Premium

LED BACK-LIT FLAT PANEL:

Model	Type	Watts	Dimming	CCT	Lumens	Dimensions (LxWxH)	Series
ASD-BLP-22D35-CC-PRM	2x2	35 W	0 - 10 V	3,000/3,500/4,000/5,000 K	4,270/4,787/4,925/4,822 lm	23 3/4"x23 3/4"x2 1/2"	Premium
ASD-BLP-24D50-CC-PRM	2x4	50 W	0 - 10 V	3,000/3,500/4,000/5,000 K	6,875/7,158/7,139/7,093 lm	47 3/4"x23 3/4"x2 1/2"	Premium

PRODUCT SPECIFICATIONS:

Construction & Materials			Electrical System		
Housing	Iron, PC, Aluminum		Input Voltage	120-277VAC 50/60 Hz	
Lens	Translucent white		Max input current	ASD-BLP-22D35-CC-PRM	0.35 A
Finish	White			ASD-BLP-24D50-CC-PRM	0.5 A
Weight	ASD-BLP-22D35-CC-PRM	6.8 lb (3.1 kg)	Inrush current (Action time)	50 A (0.5 S)	
	ASD-BLP-24D50-CC-PRM	12.3 lb (5.6 kg)	AC input range	min 100 V max 305 V	
Environmental System			Off State Power	0 W	
Work Environment	Suitable for Damp Locations, IP40		Power Consumption	ASD-BLP-22D35-CC-PRM	35 W
Operating Temperature	14°F to 104°F (-10°C to +40°C)			ASD-BLP-24D50-CC-PRM	50 W
L70 Life	R > 60,000 hrs, C > 179,000 hrs		Power Factor	> 0.9	
Optical System			Output voltage	ASD-BLP-22D35-CC-PRM	38-54 V
Luminous Flux	ASD-BLP-22D35-CC-PRM	2,263/2,720/3,240/3,765 lm		ASD-BLP-24D50-CC-PRM	
	ASD-BLP-24D50-CC-PRM	3,966/4,528/5,040/5,500 lm	Max output current	ASD-BLP-22D35-CC-PRM	650 mA
Color Temperature	3,000/3,500/4,000/5,000 K			ASD-BLP-24D50-CC-PRM	950 mA
CRI	> 80		LED driver class	Class 2	
Regular and Voluntary Certifications			Dimming compatible controls		
5-year limited warranty			Brand	Maxxima	Eaton
DesignLights Consortium (DLC) listed (Classification: Premium)					Lutron
Main: Indoor Luminaires; General Application: Troffer;			Models	MEW-DM600LV	DF10P-C1
Primary Use: Luminaires for Ambient Lighting of Interior Commercial Spaces					DVSTV-WH
cULus certified	E473854 - Recessed mounted panel		Brand	Keygma	Leviton
			Models	KGM-1A010V	IP710-DLZ

For most up-to-date spec sheets please refer to asd-lighting.com

ASD LIGHTING CORP

E-mail: orders@asd-lighting.com | Web site: www.asd-lighting.com





LED BACK-LIT FLAT PANEL

Color Changing

ORDERING INFORMATION

Model	Type	Watts	CCT	UPC
ASD-BLP-22D35-CC-PRM	2x2	20/25/30/35 W	3,000/3,500/4,000/5,000 K	819201029983
ASD-BLP-24D50-CC-PRM	2x4	35/40/45/50 W	3,000/3,500/4,000/5,000 K	819201029990
Model	Pcs. per Carton	Carton Size	Carton Weight	GTIN 14
ASD-BLP-22D35-CC-PRM	2	24.6" x 24.6" x 6.3"	17 lb	10819201029980
ASD-BLP-24D50-CC-PRM	2	48.6" x 24.8" x 6.3"	30.2 lb	10819201029997

ACCESSORIES:

Model	Name	Materials	Weight	Dimensions	
ASD-FDW-ELP22	ASD Sheetrock mounting frame for 2x2 Panels	Iron	0.93 lb (0.42 kg)	25 5/16" x 25 5/16" x 1"	
ASD-FDW-ELP24	ASD Sheetrock mounting frame for 2x4 Panels	Iron	1.9 lb (0.86 kg)	49 1/4" x 25 5/16" x 1"	
ASD-CHS4	ASD 39.37" Ceiling Hanging set for LED Panels and Troffers	Iron	0.4 lb (0.2 kg)	39.37"	
ASD-CHS6	ASD 72.83" Ceiling Hanging set for LED Panels and Troffers	Iron	0.5 lb (0.2 kg)	72.83"	
ASD-FELP22-L	ASD Surface mounting Low Frame for 2x2 Panels	Aluminum	2.3 lb (1.1 kg)	24" x 24" x 2"	
ASD-FELP24-L	ASD Surface mounting Low Frame for 2x4 Panels	Aluminum	3.5 lb (1.6 kg)	48" x 24" x 2"	
ASD-RC-2.4G-H	ASD Handheld Controller for CCT Adjustable for Panels	Plastic	0.1 lb (0.1 kg)	6" x 1 3/4" x 5/8"	
ASD-RC-2.4G-W	ASD Wall-type Controller for CCT Adjustable for Panels	Plastic	0.1 lb (0.1 kg)	4 1/8" x 1 5/8" x 1 1/2"	
Model	UPC	Pcs. per Carton	Carton Size	Carton Weight	GTIN 14
ASD-FDW-ELP22	855029006393	20	26.77" x 10.43" x 7.87"	25.13 lb	10855029006390
ASD-FDW-ELP24	857622006107	20	48.62" x 10.43" x 7.87"	48.94 lb	10857622006104
ASD-CHS4	859961005148	50	10.4" x 10.4" x 7.7"	23.7 lb	10859961005145
ASD-CHS6	855029006522	50	8.9" x 8.9" x 8.9"	24.9 lb	10855029006529
ASD-FELP22-L	819201021581	9	25.2" x 9.4" x 7.9"	24.4 lb	10819201021588
ASD-FELP24-L	819201021598	9	49.6" x 9.4" x 7.9"	40.6 lb	10819201021595
ASD-RC-2.4G-H	810050732499	100	13.0" x 10.6" x 6.7"	14.3 lb	10810050732472
ASD-RC-2.4G-W	810050732529	100	18.5" x 10.2" x 10.2"	14.3 lb	10810050732489

INSTALLATION GUIDE

IMPORTANT SAFETY INFORMATION:

Please read all the instructions below before installation.

- Make sure that the supply voltage corresponds to the rated product voltage.
- The product must be installed by a qualified electrician in accordance with the National Electrical Code and corresponding local codes.
- If the product is damaged, do not use it.

⚠ WARNING

RISK OF PERSONAL INJURY – READ and follow all WARNINGS and installation instructions.

Keep or give to the owner for future reference.

Risk of cuts: Wear gloves to prevent cuts or abrasions when removing from carton, handling, installing, and maintaining this product.

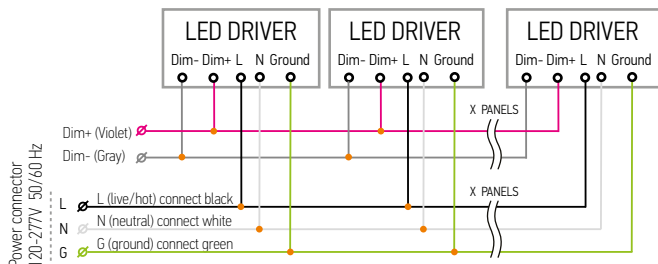
Risk of electric shock: This product must be installed in accordance with the applicable installation code by a person familiar with the construction and operation of the product and the hazards involved.

Risk of Fire: Minimum 194°F supply conductors. Consult a qualified electrician to ensure correct branch circuit conductor.

ASD® assumes no responsibility for claims arising out of improper or careless installation or handling of this product.

For recessed installation: Access above ceiling required. Inherently protected. Vapor barrier must be suitable for 194°F.

ELECTRICAL SCHEMATIC DIAGRAM



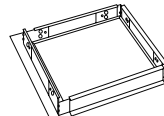
Linking limits: up to 20 panels can be linked together.
Total power of LED Panels shall not exceed the wattage of dimmer.

PACKAGE CONTENTS:

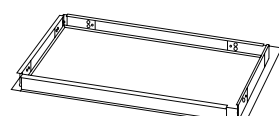
Description	Q-ty
LED Back-Lit Flat Panel	2
Box	1
Cut Sheet	2

ACCESSORIES (sold separately):

Sheetrock mounting frame

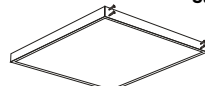


for BLP 2x2
ASD-FDW-ELP22




for BLP 2x4
ASD-FDW-ELP24

Surface mounting Low frame




for BLP 2x2
ASD-FELP22-L




for BLP 2x4
ASD-FELP24-L

Ceiling Hanging set



39.37"
ASD-CHS4



72.83"
ASD-CHS6

For most up-to-date spec sheets please refer to asd-lighting.com

ASD LIGHTING CORP

E-mail: orders@asd-lighting.com | Web site: www.asd-lighting.com





LED BACK-LIT FLAT PANEL

Color Changing

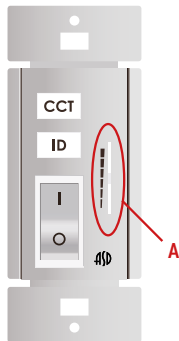
THE HANDHELD REMOTE CONTROL ASD-RC-2.4G-H sold separately:



<div><div>ON</div><div>OFF</div></div>	<div><div>ON</div><div>OFF</div></div> <div><div>TURN ON</div><div>TURN OFF</div></div> <div>Handheld remote controller cannot be used as a switch, it should be used together with the switch.</div>		
<div>ID</div>	<div>Pairing the Light</div> <div>While holding the "ID" button, power on your panels. Your panels should flash twice to indicate they are paired. You can pair several lights at once.</div>		
<div>ID</div> <div>+</div> <div>▼</div>	<div>Disconnect Remote from Panels</div> <div>While holding the down arrow and the ID button, turn on your panels, this will disconnect them from your remote. Panels will flash twice to indicate they are no longer paired.</div>		
<div>1</div> <div>2</div> <div>3</div> <div>4</div>	<div>Group Selecting Buttons</div> <div>To assign panels to a group you must first pair them with your remote. Once paired hold the # button you wish to assign to your panels. While the lights are off hold the # button and turn on your switch. Panels will turn on. Do not release the button until the panels flash one time. The flash may not occur till after 3 seconds of turning on the lights. If you release before the flash your groups will not be set up.</div>		
<div>Save</div>	<div>Setting Default Brightness and CCT</div> <div>To save the desired settings as a default, turn the panel to desired color temp and brightness, hold the Save button on the remote until the panels turn off. This will save your setting for future use.</div>		
<div>ALL</div>	<div>All groups selected</div>		
<div></div> <div>5,000K</div>	<div></div> <div>4,000K</div>	<div></div> <div>3,500K</div>	<div></div> <div>3,000K</div>
<div>☀</div> <div>25% brightness</div>	<div>☀</div> <div>50% brightness</div>	<div>☀</div> <div>75% brightness</div>	<div>☀</div> <div>100% brightness</div>
<div>▼</div> <div>Decrease brightness</div>	<div>▲</div> <div>Increase brightness</div>	<div>↻</div> <div>Decrease color temperature</div>	<div>↻</div> <div>Increase color temperature</div>

- ▶ After turned on, the light will automatically detect the 0-10v dimmer to set brightness, it will get 100% brightness if no dimming signal to input the light.
- ▶ If use 0-10V dimmer to control, light brightness will convert to 0-10V dimmer's current brightness setting.
- ▶ If using remote controller to control, light brightness will only change from its current brightness rather than remote controller's current brightness setting.

THE WALL-TYPE REMOTE CONTROL ASD-RC-2.4G-W sold separately:



I	Turn on	Turn off
I	Wall-type remote controller cannot be used directly as a switch, it should be used together with the switch.	
I	Press the "ON" button for 6-9 seconds until the light goes out, the current brightness and color temperature are automatically saved. Turn off lights then turn on, the last saved brightness and color temperature will be displayed by default.	
O	Turn off the light to save the current color temperature then turn on the light, the last saved color temperature will be displayed by default.	
ID	Light code matching button Pressing the 'ID' buttons simultaneously will keep the remote controller's indicator on. Turn on the light and release the buttons after the light has been on for 2s completing the matching process. Matching code for several lights together is available.	
A	Brightness adjustment If you need to use both handheld controller and wall controller for the same light, please don't use this function, use the following copy function instead.	
CCT	Press the 'CCT' button, the color temperature will cycle between 3,000K/3,500K/4,000K/5,000K. After shutting down/turning off the current color temperature will be saved.	

Using the matching method, the wall remote can copy some of the functions of the handheld remote. See below for instructions.

NO	Grouping	Handheld controller	Wall-type controller
1	1	1 + ID	ON+CCT
2	2	2 + ID	ON+CCT
3	3	3 + ID	ON+CCT
4	4	4 + ID	ON+CCT
5	All	ALL + ID	ON+CCT

- ▶ After 10s of each operation the controller will enter standby power saving mode. If you need to make adjustments, simply press the "ON" button, the indicator will flash to show it is working. (If the controller is under working mode, the indicator will flash no matter which button is pressed).
- ▶ Power the light off then power it on, the last saved brightness (which is saved by the button "ON") and the last saved color temperature (which is saved by the button "ON" or "OFF") will be displayed by default. The defaulted factory setting of the light is 100% brightness and 4,000K.

For most up-to-date spec sheets please refer to asd-lighting.com

ASD LIGHTING CORP

E-mail: orders@asd-lighting.com | Web site: www.asd-lighting.com





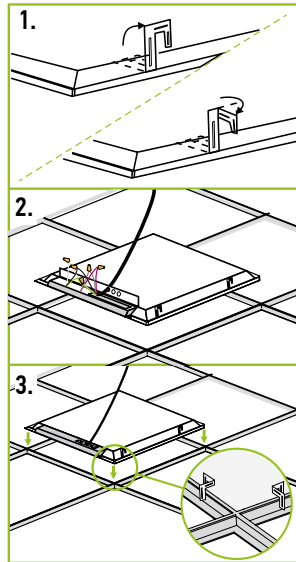
LED BACK-LIT FLAT PANEL

Color Changing

INSTALLATION STEPS

RECESSED MOUNT:

1. Lift all mounting clips along the edges of the panel. Turn the mounting clip head.
2. Connect the wires in same color (correspond to wire N, L and G) together with nut wire connectors
3. Adjust into place. Ensure the clips are fastened to the ceiling's T-BAR/T-GRID.

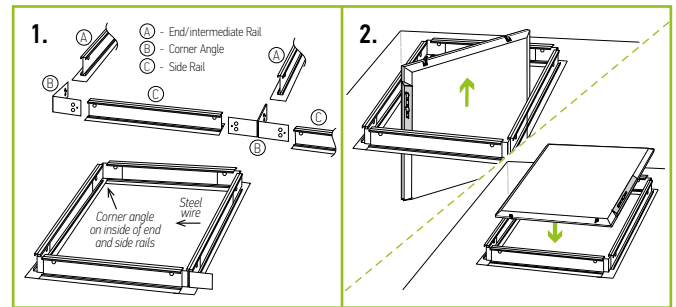


RECESSED SHEETROCK MOUNT

ASD-FDW-ELP22 | ASD-FDW-ELP24 sold separately:

1. Following the picture above, slide part B into the inboard side of parts C and A as shown.
2. Place assembled frame into a ceiling opening and add steel wires for support as pictured below. After wiring fixture, carefully slide it through ceiling opening, rotate and drop fixture into place.

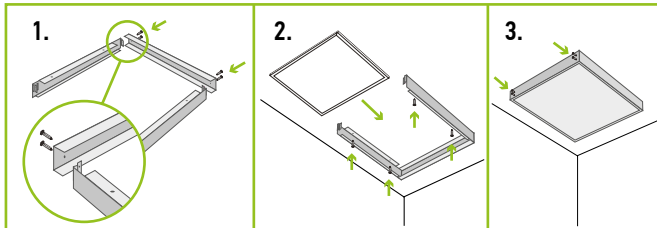
Note: For best results, attach supporting steel wires going into the ceiling to sides of frame after assembly. End rail can be used as intermediate rail for tandem row



SURFACE MOUNT **ASD-FELP22-L**

ASD-FELP24-L sold separately:

1. Connect 3 pieces of the frame to the ceiling using four screws.
2. Connect the panel wires as shown in electrical schematic diagram and insert panel into frame.
3. Attach the fourth piece and secure with screws. Power on to ensure installation is complete.

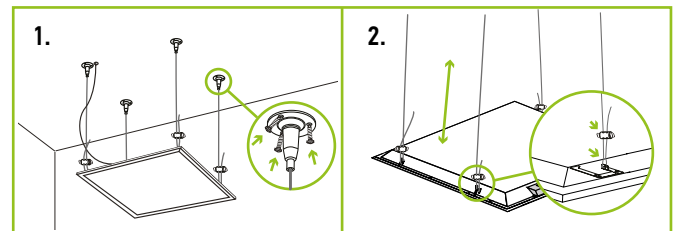


*Must remove earthquake hook before installing surface mount frame.

SUSPENDED MOUNT

ASD-CHS4 | ASD-CHS6 sold separately:

1. Insert the wall plugs (not included) into the ceiling and secure the suspension surface fixing to the ceiling.
2. Lock the suspension cable to the clip. Adjust the cable length to meet the height requirements. Fix the cable to the ceiling.



*For 2x4 installation please use 2 pcs of Ceiling Hanging set.

For most up-to-date spec sheets please refer to asd-lighting.com

ASD LIGHTING CORP

E-mail: orders@asd-lighting.com | Web site: www.asd-lighting.com

